

## Panasonic Network Camera – External Setting

### (Camera Setup)

- 1) Go “Setup”-→ uPnP -→ Auto Port Forwarding Change to “Disable”
- 2) Go “Setup”-→ DynamicDNS -→ Click “Viewnetcam.com”
- 3) Follow the Step-by-Step instructions below

The screenshot shows the 'DynamicDNS' configuration page for Viewnetcam.com. The browser window title is 'Network Camera - Windows Internet Explorer' and the address bar shows 'http://203.117.196.62:50001/CgiStart?page=Setup&Language=0'. The page has a navigation menu with 'Setup' selected. On the left, a sidebar lists various settings categories: Basic, Account, Buffer/Transfer, and Advanced. The 'DynamicDNS' option is highlighted in the sidebar. The main content area features the Viewnetcam.com logo and a paragraph explaining the service. Below this is a 'Viewnetcam.com configuration' table with fields for 'Personal (Camera) URL', 'Your Account Link', and 'Updating time'. A 'Save' button is highlighted with a black arrow and the word 'Click' next to it. The status bar at the bottom indicates 'Internet' and '100%' zoom.

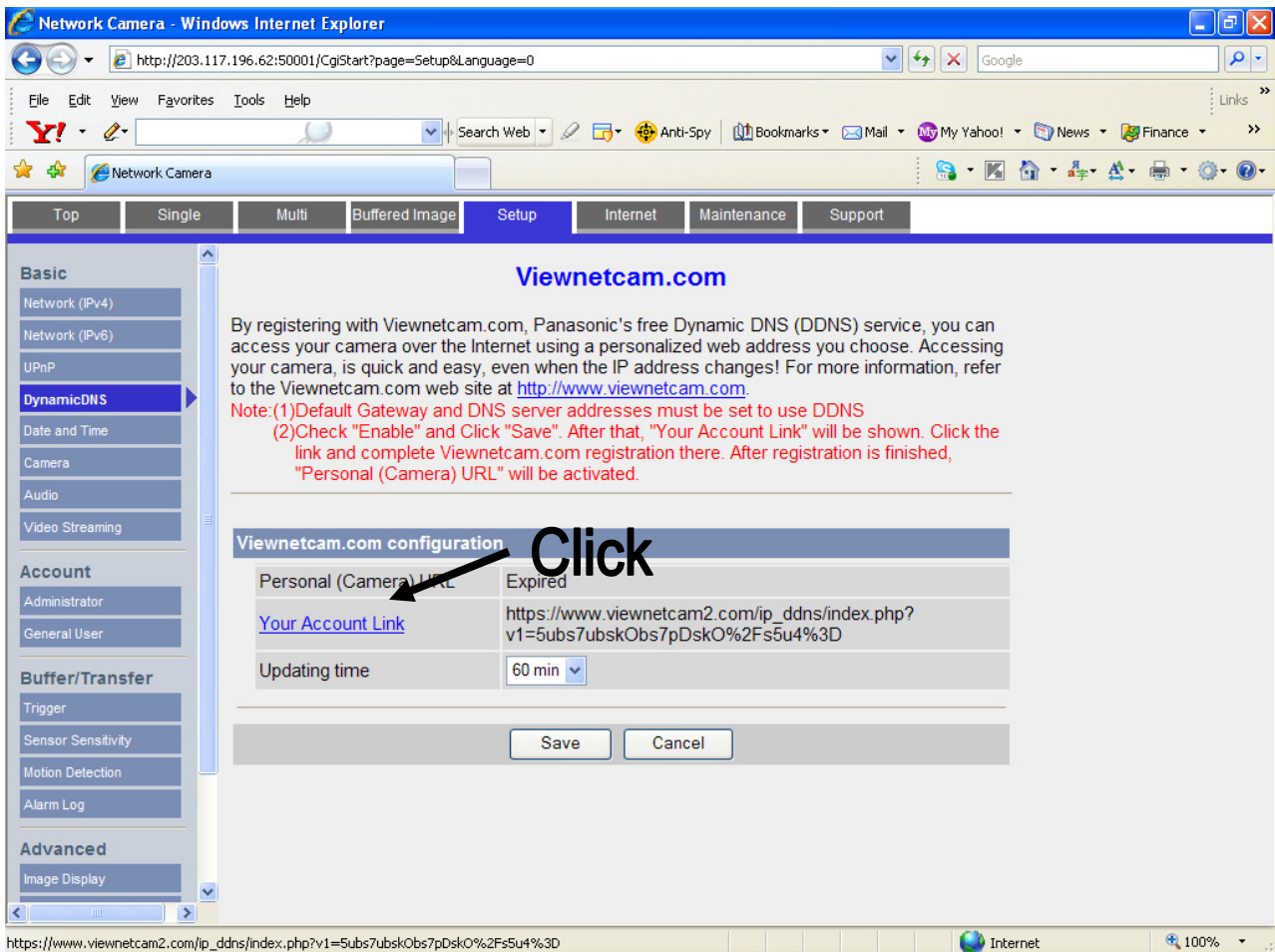
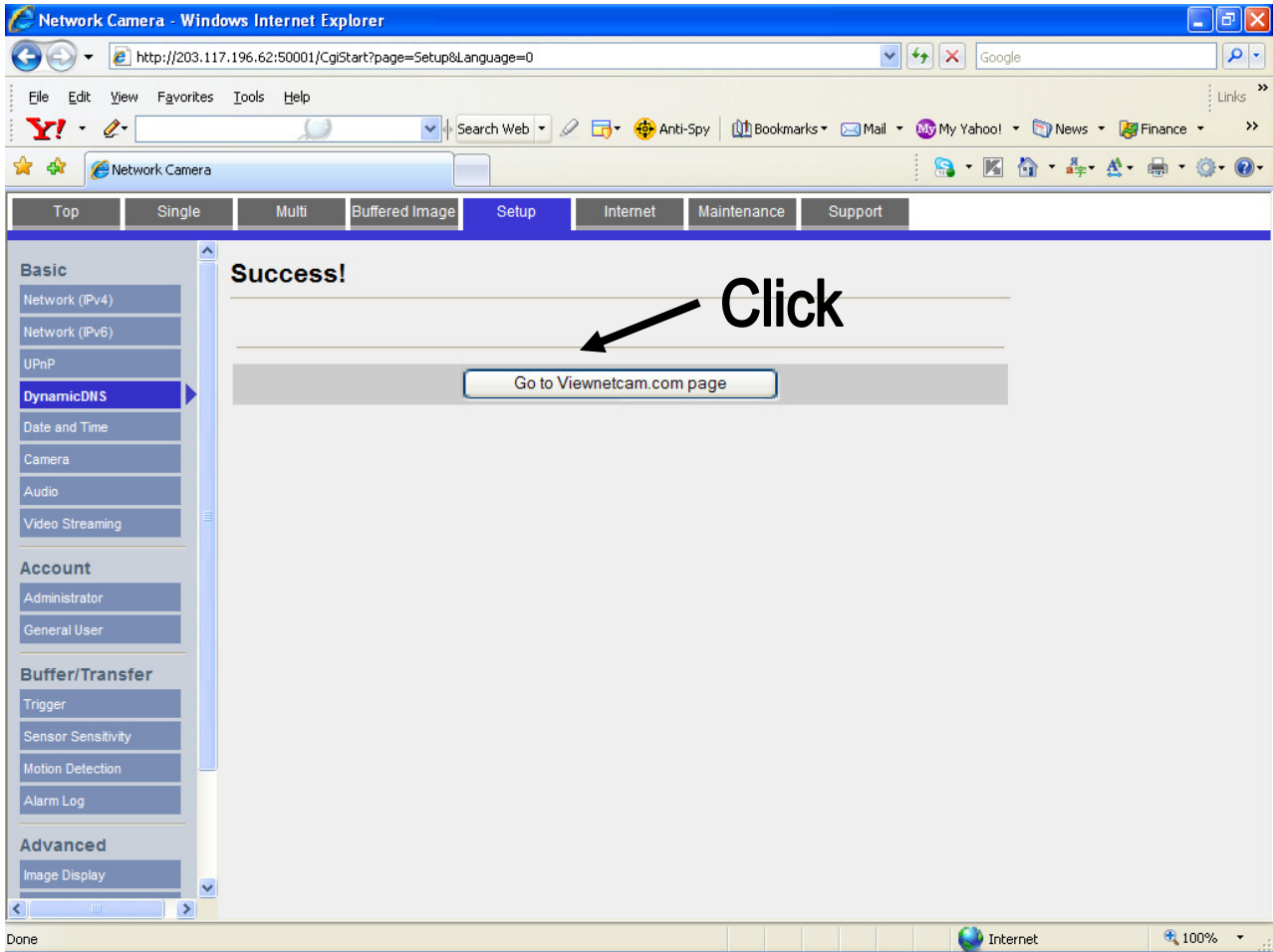
**Viewnetcam.com**

By registering with Viewnetcam.com, Panasonic's free Dynamic DNS (DDNS) service, you can access your camera over the Internet using a personalized web address you choose. Accessing your camera, is quick and easy, even when the IP address changes! For more information, refer to the Viewnetcam.com web site at <http://www.viewnetcam.com>.

Note: (1)Default Gateway and DNS server addresses must be set to use DDNS  
(2)Check "Enable" and Click "Save". After that, "Your Account Link" will be shown. Click the link and complete Viewnetcam.com registration there. After registration is finished, "Personal (Camera) URL" will be activated.

Viewnetcam.com configuration	
Personal (Camera) URL	Expired
<a href="#">Your Account Link</a>	<a href="https://www.viewnetcam2.com/ip_ddns/index.php?v1=5ubs7ubskObs7pDskO%2Fs5u4%3D">https://www.viewnetcam2.com/ip_ddns/index.php?v1=5ubs7ubskObs7pDskO%2Fs5u4%3D</a>
Updating time	60 min

**Click** → Save





Click “New Registration” -> Then follow the guided registration steps

If your Registered Domain Name is “Thomas” :

Your External IP Log-in will be “ http://thomas.viewnetcam.com