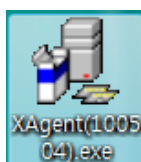


Xagent – network client software

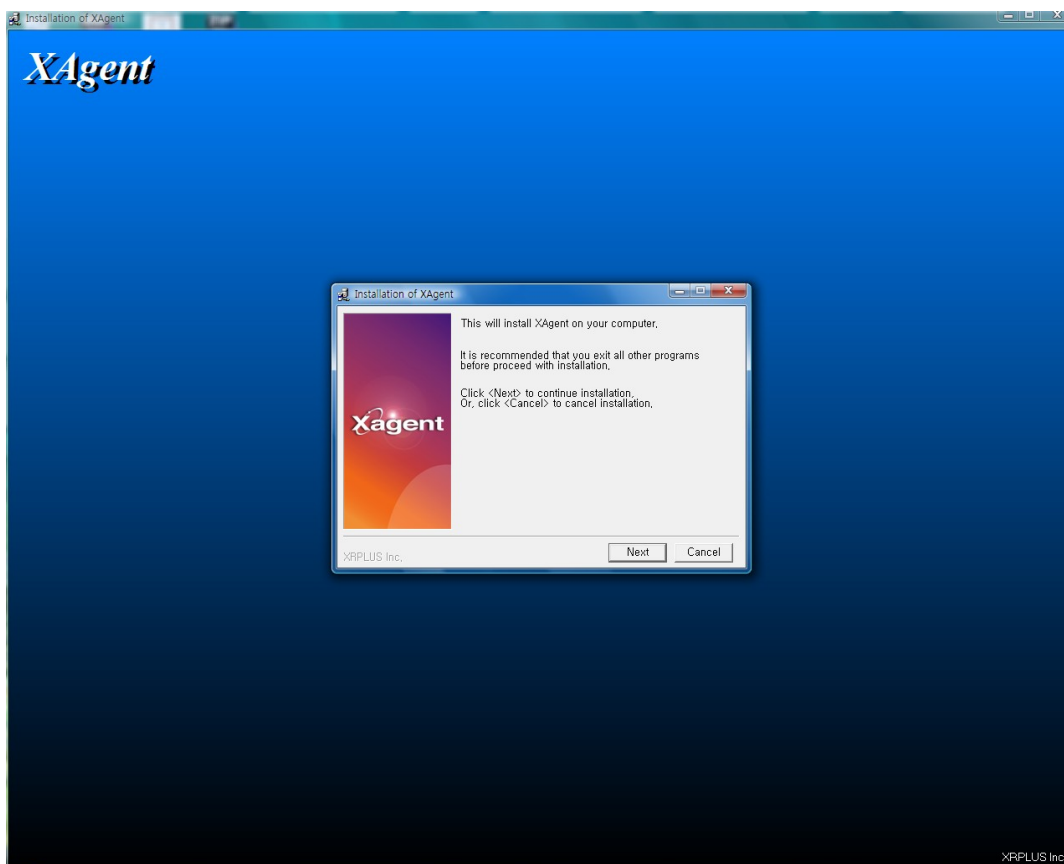
Minimum PC specification

CPU : Core 2 Duo 1.8GHz, Graphic : 256MB

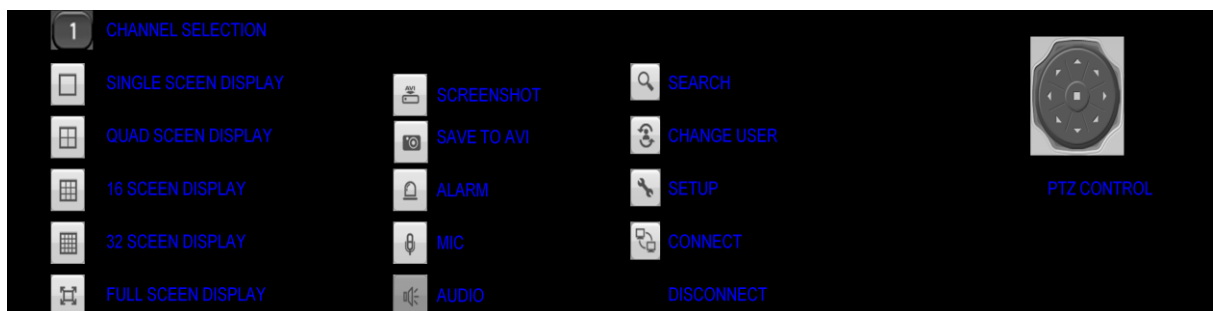
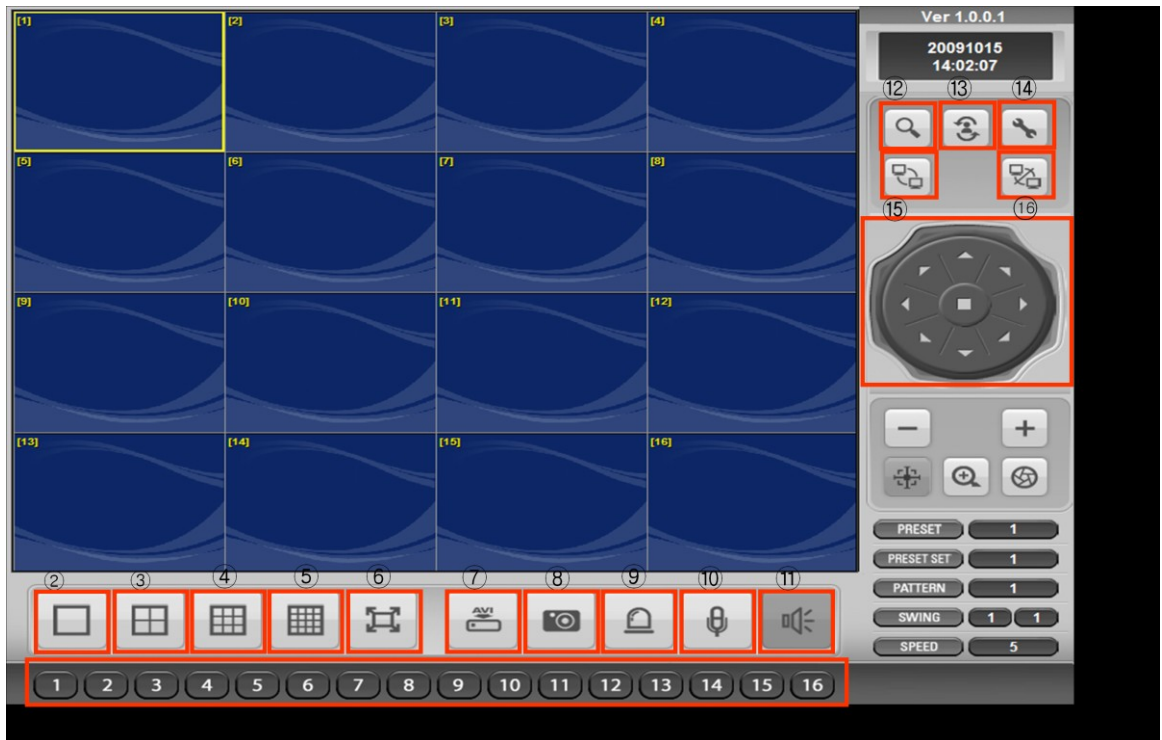
Installation



When you execute Xagent software in the CD provided with DVR, you will see installation page as below,



Name of icons on the client screen



DESCRIPTION OF FUNCTION BUTTONS

- ① CAMERA SELECTION Button : Indicate Connected Camera No. & Select camera No. to see the image.
- ② DISPLAY Button : Change the division screen to 1,4,9 or 16.
 MANUAL SWITCH Button : Change the live screen manually by mouse click.
 FULL SCREEN Button : Change to the full screen.
- ③ SCREENSHOT Button : Takes screenshot from the live screen
- ④ SAVE TO AVI Button : Save the current displayed image to AVI file.

ALARM Button : Control Alarm output.

MIC Button : Communicate between DVR and Remote Client.

AUDIO Button : Listen live audio (ON/OFF).

⑤ SEARCH Button : Entering the Search mode to playback the image.

CHANGE USER Button : Login with different ID.

SETUP Button : Entering the client software to change or check the setting.

⑥ CONNECT Button : Connect DVR.

DISCONNECT Button : Disconnect DVR.

⑦ PTZ CONTROL Button : Control PAN/TILT/ZOOM of camera.

1) IP Insertion through IE -

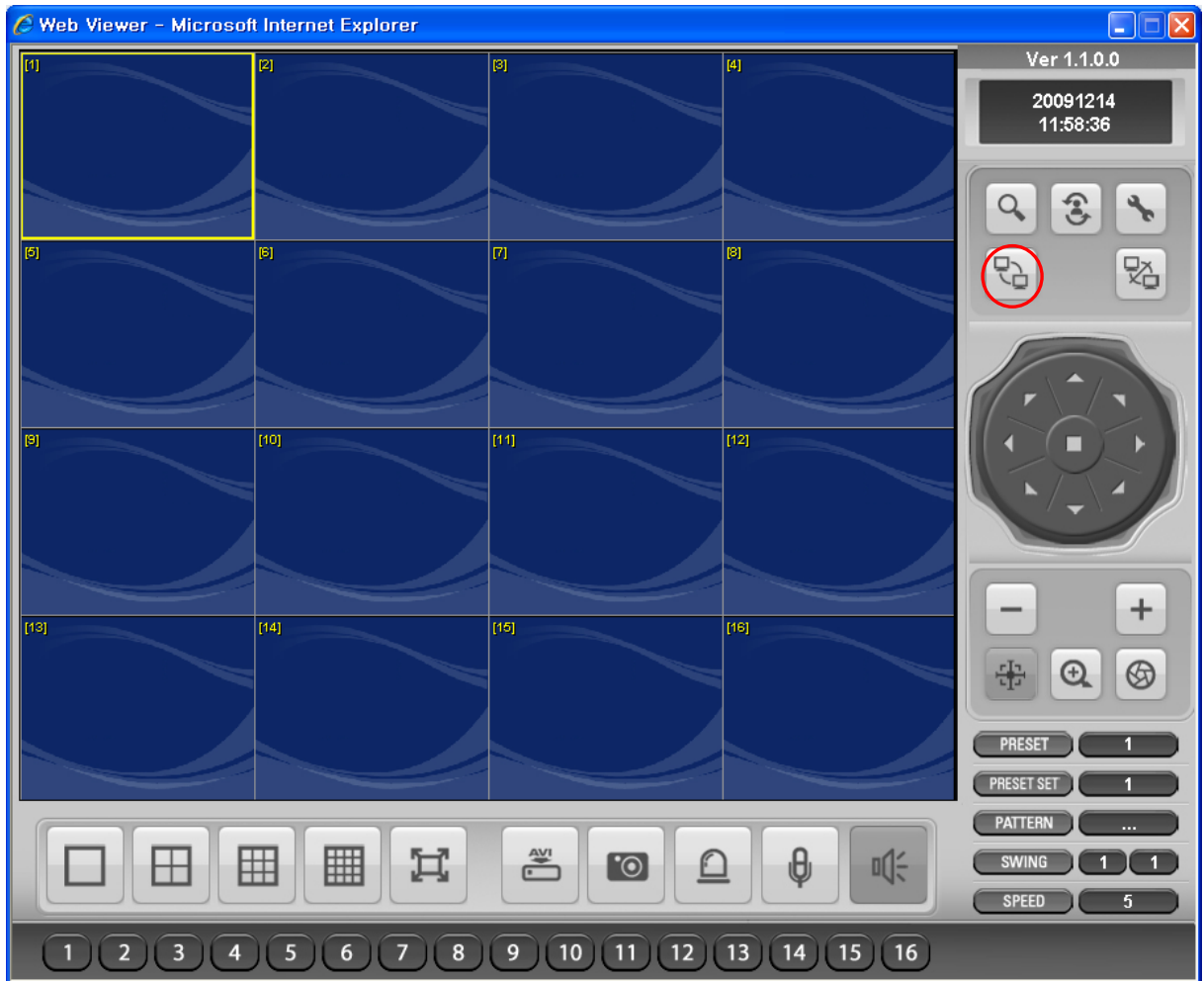
Connection will be done just writing DVR IP address on the Internet Explorer window. If domain is kept to reach DVR by DDNS server, it is allowed to write domain name directly.


Downloading ActiveX Control

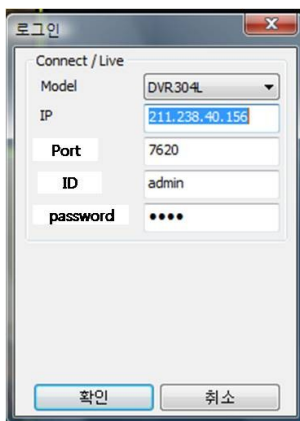
When DVR connects network, the window to download active X control will be displayed in case that no downloading "Active X control" has been done or one installed DVR is higher version than PC Client. Then, select "Yes".

2) IP Insertion through Network Installation -

User can also simply connect network via Network Installation



When User click the button of 'Connection'  of Network installation program, the IP SET window will be appeared to connect to a DVR.




Please put DVR IP address, DVR Port, ID, Password in the blank then press "OK" button.

Live Screens

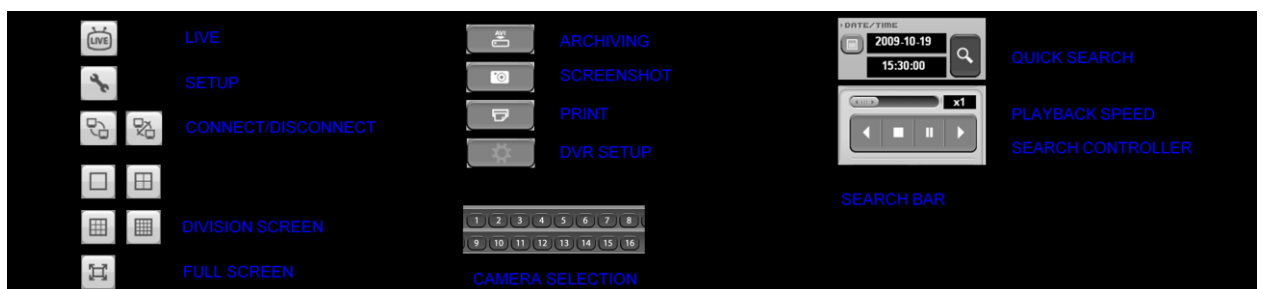
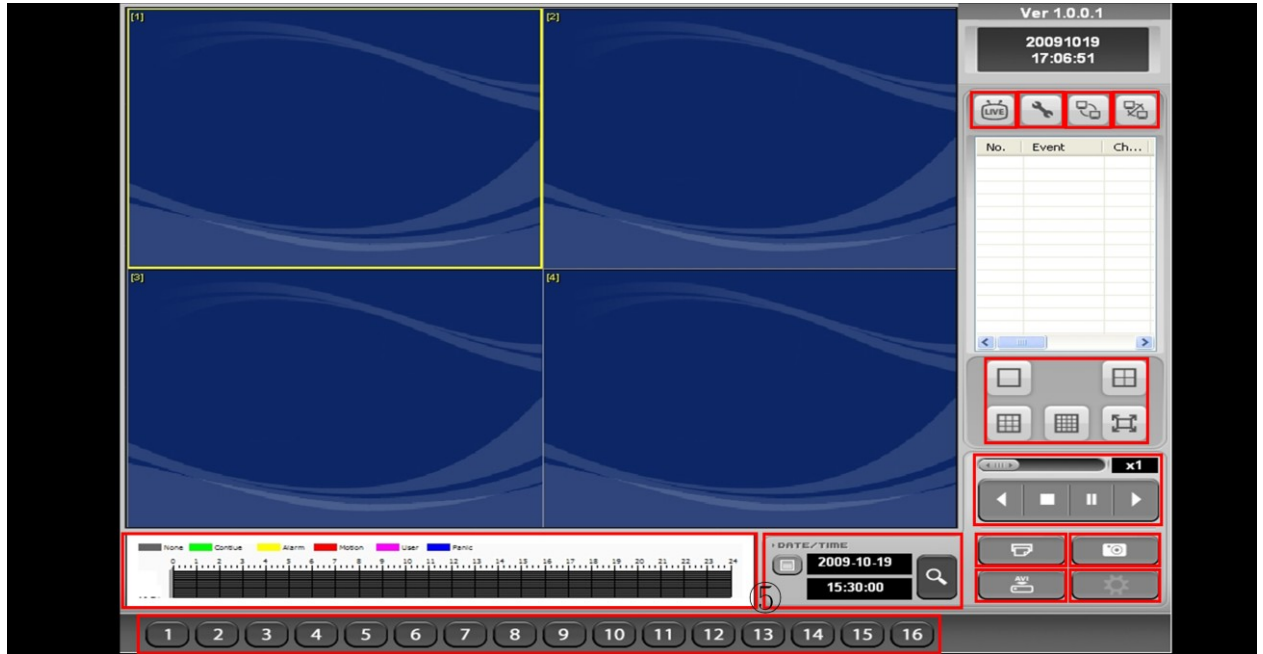


To change IP address,

CLICK  **“CHANGE USER”** and you will be able to change the IP information

REMOTE SEARCH

Click the **SEARCH** button to playback.



EXPLANATION OF FUNCTION KEYS

- ① LIVE Button : Return to the Live mode.
SETUP Button : Entering the client software to change or check the setting.

- ② DIVISION SCREEN Button : Change the division screen to 1,4,9 or 16.
FULL SCREEN Button : Entering screen to Full screen Mode

- ③ AVI BACKUP Button : Can backup by channel including audio.
SCREEN SHOT Button : Can save current image.
PRINT Button : Can print current image.
DVR SETUP Button : Entering the connected DVR to change or check the setting.

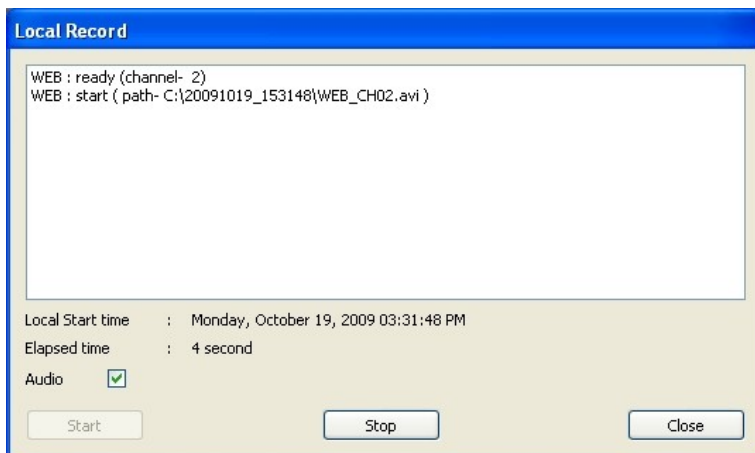
- ④ CAMERA SELECTION Button : Can select camera number.

- ⑤ QUICK SEARCH Button : To playback quickly, select date and time.

- ⑥ PLAY SPEED CONTROLLER Button : Can control playback speed.
SEARCH CONTROLLER Button : Can control search function.

- ⑦ SEARCH BAR : Displayed recording status.

LOCAL RECORD

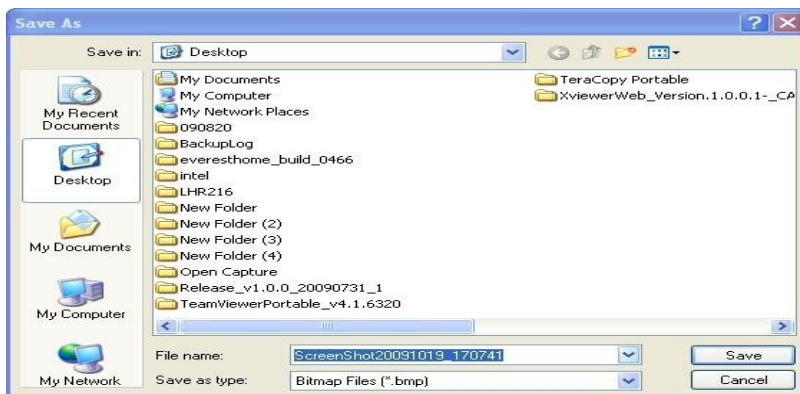


Pre-recorded footage on a DVR can be archived to the local PC hard disk.

Click the LOCAL RECORD button to show the archiving screen.

Click Start to begin Record data to the PC hard drive.

SCREENSHOT

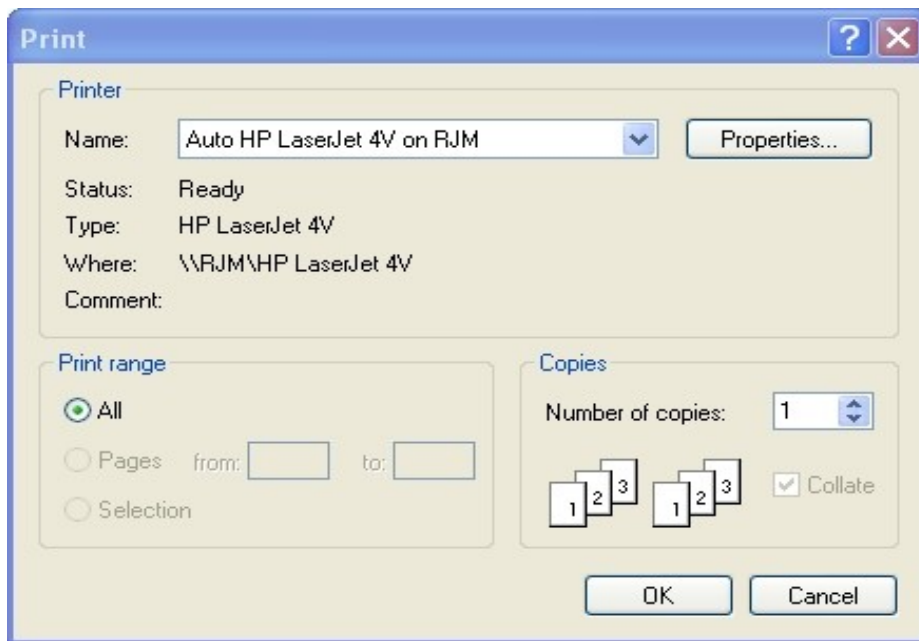


During playback, a live still image can be save to the local PC hard disk by clicking the **SCREENSHOT** button.

Specify the file location, file name and choose BMP or JPG format. Click 'Save'.

The snapshot image is saved in the same style as the currently selected screen display, for example, quad screen, single screen etc.

PRINT



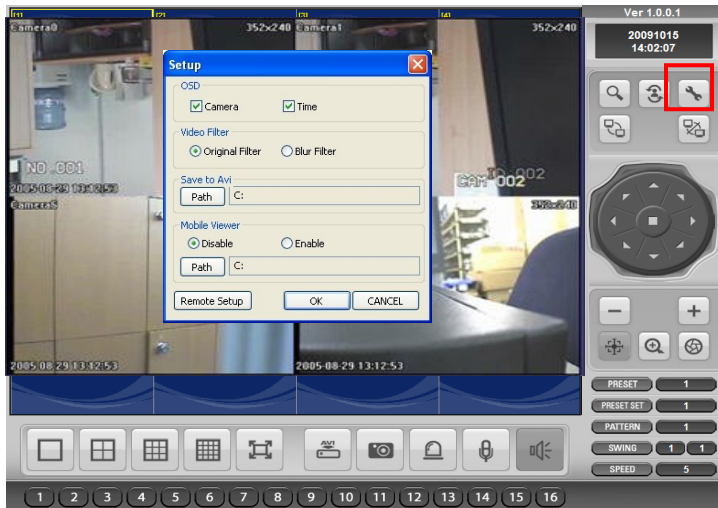
During playback, a still image can be printed on the local PC printer by clicking the **PRINT** button.

The printed image is in the same style as the currently selected screen display, for example, quad screen.

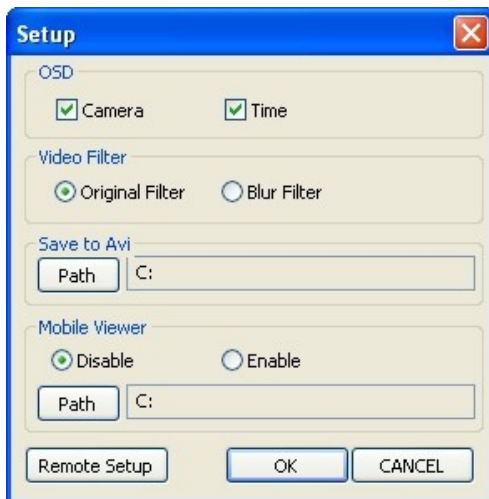
X-Viewer Web Setting

To change basic X-Viewer Web setting,

*Anyone can change X-Viewer Web's OSD setting.



Press  button.



OSD

Camera – Turn on / off Camera Name

Time – Turn on / off Time

Video Filter

Original Filter – Shows no filtered screen

Blur Filter – Shows natural screen

Save to AVI – Determines where to save AVI

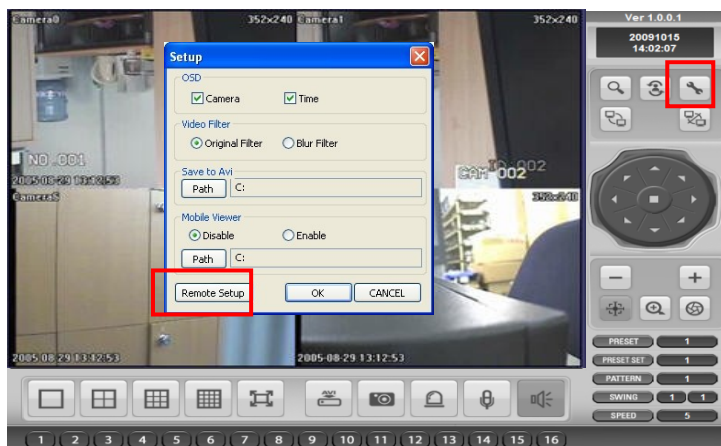
Mobile Viewer – Turn on / off X-Viewer Mobile


REMOTE SETUP

Only the ADMIN user can configure a DVR remotely

ENTERING SETUP

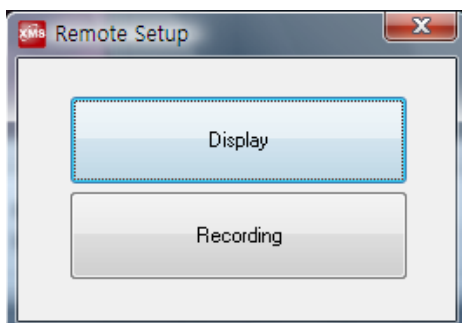
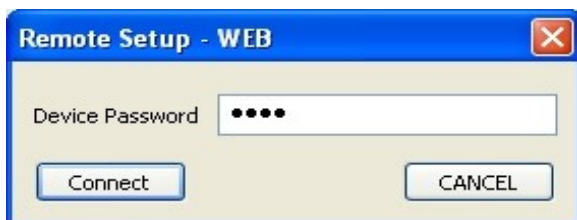
Click the **SETUP** button, enter the correct password for the ADMIN user and click OK.



Press  button and it shows on the left screen. Input the password.

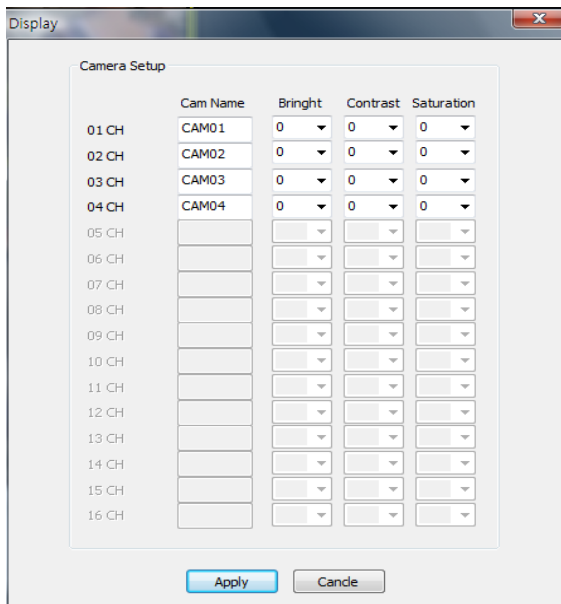
Click the "Remote Setup" icon.

And type in user password



Recording Operation

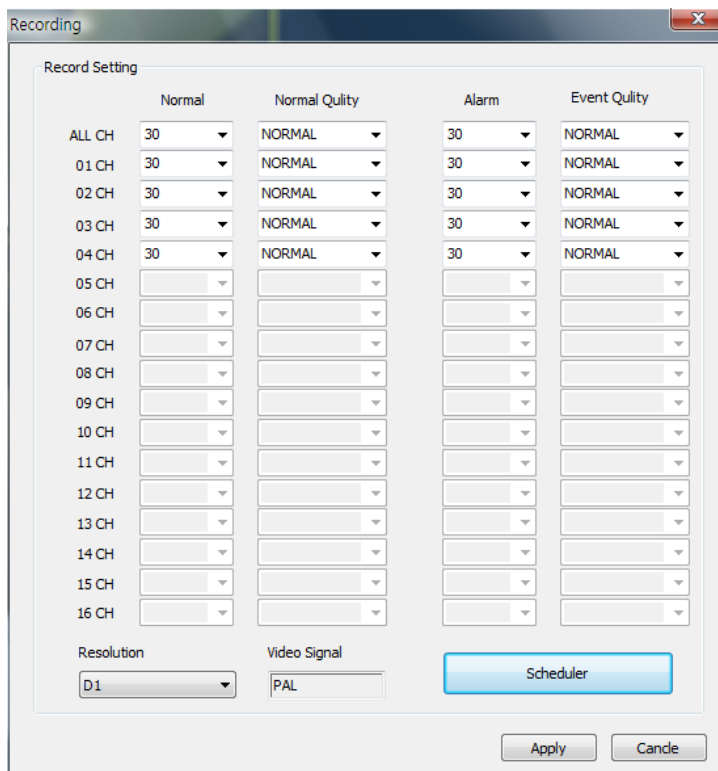
1. Display



- Camera Name

Able to name each camera and adjust color of cameras.

2. Recording



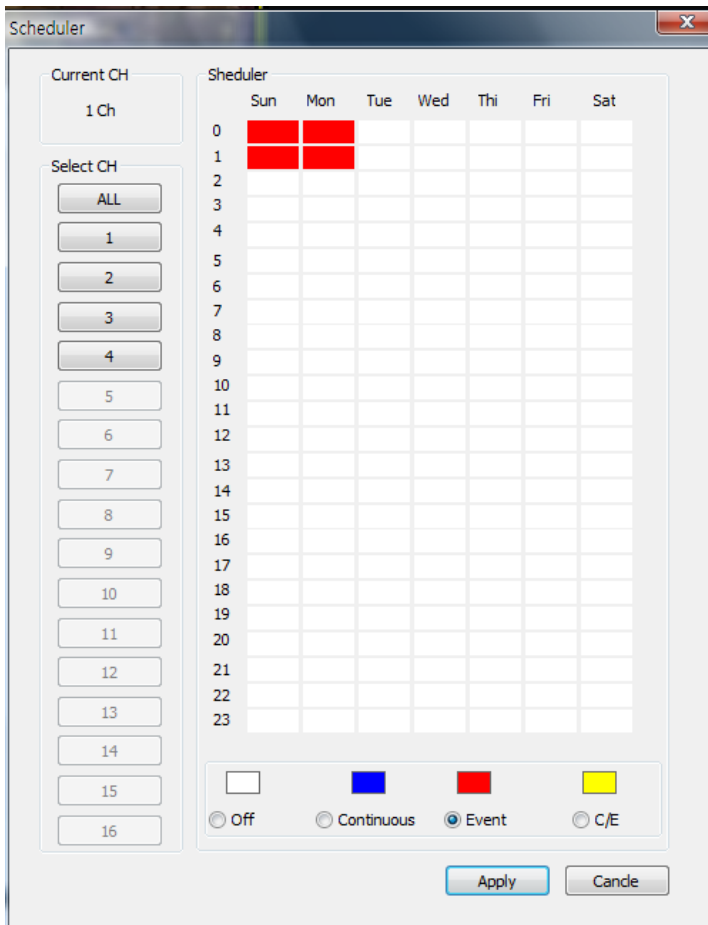
You can set up frame rate, resolution of cameras.

*Normal – Continuous recording

*Event – Motion, alarm, Vloss

You can also check video signal
PAL – NTSC

If you click “Scheduler”, you will see setup window of recording schedule.



For recording schedule, first click recording mode in the bottom among continuous, event, off or continuous + event.

Then, select camera or all.
Drag & drop on the day/time table.
Click Apply for saving.